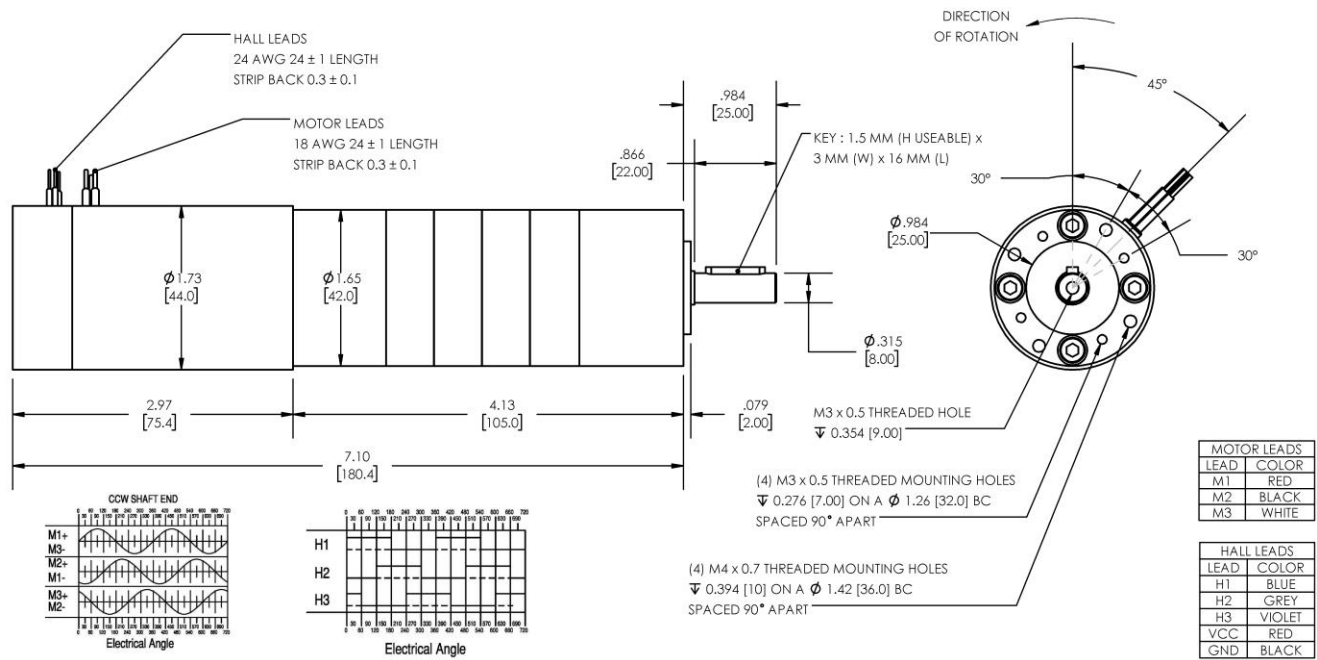


Model Number:

MMP BL44-297L-180V GP42-1594



DIMENSIONS ARE INCHES [MM] UNLESS OTHERWISE STATED

PLANETARY GEARMOTOR OUTPUT PARAMETERS:	VALUE	UNITS	TOLERANCE
Gearhead Ratio (exact)	1593.65 : 1		
Gearhead Shaft Output Speed (at full-load)	2.9	RPM	MAX
Gearmotor Rated Continuous Torque	266	In-Lbs	MAX
Gearmotor Rated Peak Torque	266++	In-Lbs	----
Gearhead Standard Backlash	63	Arc Minutes	MAX
Gearhead Efficiency	65%	----	----
Output Shaft Radial Load Capacity	68	Lbs	MAX
Output Shaft Axial Load Capacity	25	Lbs	MAX
Gearmotor Total Weight	2.5	Lbs	MAX

++ All Peak Torque values are dependent upon duty. Contact our sales office for details.

DC MOTOR PERFORMANCE PARAMETERS:	VALUE	UNITS	TOLERANCE
Rated DC Voltage	180	DC VOLTS	----
Rated Continuous Current	0.11	AMPERES	----
No-Load Speed	4843	RPM	+/- 15%
Rated Speed	4684	RPM	+/- 15%
Rated Continuous Power Out	14	WATTS	+/- 15%
Rated Continuous Torque	4.1	OZ-IN	----
Peak Torque (motor only)	88	OZ-IN	----
No-Load Current	0.03	AMPERES	10%
Back EMF Constant (Ke)	36.8	V/KRPM	+/- 10%
Torque Constant (Kt)	49.8	OZ-IN/AMP	+/- 10%
DC Armature Resistance	67.80	OHMS	+/- 15%
Armature Inductance	63.79	mH	+/- 15%
Armature temperature	155	DEG. C	MAX

NOTES:

- ENCODER & BRAKE OPTIONS AVAILABLE – [FOLLOW THIS LINK FOR DETAILS](#)
- NEMA MOUNTING FLANGE OPTION AVAILABLE – [FOLLOW THIS LINK FOR DETAILS](#)